



Open House Ideas



TO INTRODUCE THE PYRAMID MODEL TO FAMILIES

Positive outcomes result when teachers and families work together in supporting children in Pyramid Model Practices. Open House is a great time to share information with families about the Pyramid Model and obtain family input and information.



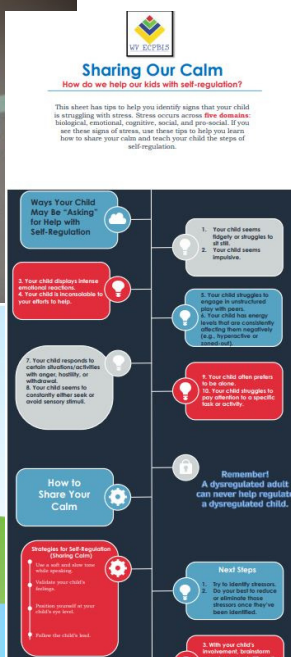
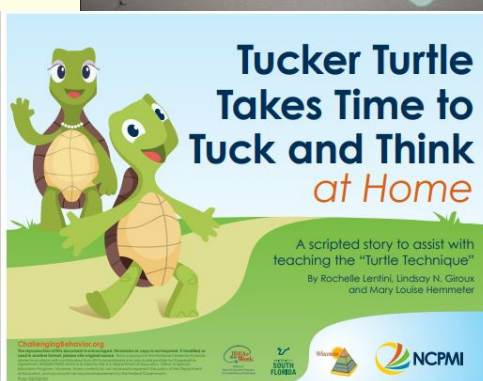
SHARE EXPECTATIONS

Let families know what the expectations are for the year. Discuss with families the expectations for the classroom and give them a laminated "refrigerator" copy to take home. This can serve as a reminder for the expectations at school each day as well as a guide for creating expectations at home.

TUCKER TURTLE MAKE AND TAKE

Support teaching anger management by sharing the Tucker Turtle Story and having families make their very own Tucker to practice! You can also share an infographic on how parents can share their calm.

[Tucker Turtle Takes Time to Tuck and Think at Home \(usf.edu\)](#)
[Sharing Our Calm \(wvcpbis.org\)](#)



PROBLEM SOLVING

Problems that occur at school are likely to happen at home as well. Reinforce problem solving by providing families with a solution kit and a "We Can Be Problem Solvers at Home" Scripted Story to use at home.

[Solution Kit: Home Edition \(usf.edu\)](#)

[We Can Be Problem Solvers at Home! \(usf.edu\)](#)

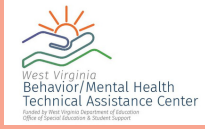
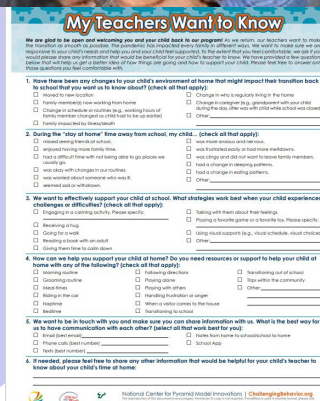
BUILD RELATIONSHIPS WITH FAMILIES

Start building relationships with families by getting to know them by sharing information and obtaining their input. In addition to having conversations with families you may want to take pictures to display.

[My Teachers Want to Know \(usf.edu\)](#)

[Family Fact Sheet \(usf.edu\)](#)

[Anchors-Aweigh.pdf \(wvcpbis.org\)](#)



More resources can be found at:
[NCPMI Resource Library](#)
References: www.challengingbehavior.org



Visit us at: wvcpbis.org