

Leading a SWPBIS County Wide Effort



Marion County

- ▶ Gia Deasy
 - Administrative Assistant for Special Services

- ▶ Denise Shipley
 - Behavior Specialist, SWPBIS coach

MARION COUNTY

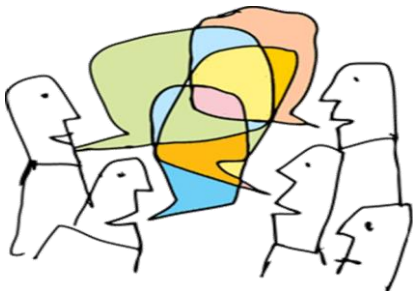




Lessons Learned

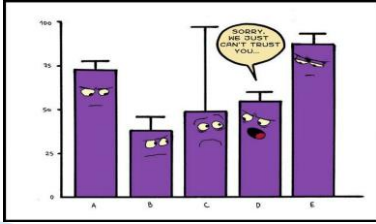
- ▶ Administrator involvement and support is crucial to full implementation and success.





Lessons Learned

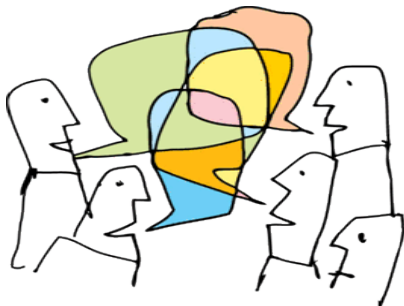
- ▶ Data must be visual and easy to interpret
 - WV Zoom E
 - 10th Month/ EOY report



Lessons Learned

- ▶ It's not about a school store





Lessons Learned

- ▶ Teaching expectations is crucial. It is often overlooked and under emphasized.



Lessons Learned

- ▶ Kick Offs are worth the trouble
 - "This is important"
 - "This is fun"
 - "This involves everyone"

**KICK
OFF**

Lessons Learned

- ▶ Don't fret over 100% buy in





Lessons Learned

- ▶ Re-Training is a must
 - SLIPPAGE HAPPENS



Lessons Learned

- ▶ Central Office oversight and support is helpful.
 - Periodic meetings
 - Financial support
 - Action plans





Central Office Support





Fiscal Support



Implementing with Fidelity



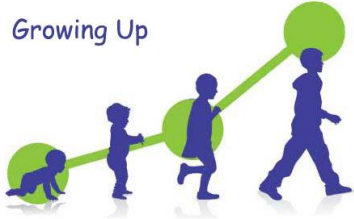
Implementing with Fidelity

- ▶ Use the Tiered Fidelity Inventory (TFI)
 - Twice a year
 - Action Planning
 - Linked to school level strategic plan
 - Tied to request for fiscal support



SWPBIS across Programmatic Levels

Growing Up



SWPBIS TFI Tiered Fidelity Inventory

Existing Systems & Structures



Relevance / Relevant

Relevance is the concept of one topic being connected to another topic in a way that makes it useful to consider the second topic when considering the first



Consider the **relevance** of SWPBIS to the following existing systems/structures

- ▶ MTSS
- ▶ SAT
- ▶ School Strategic Plans
- ▶ LSIC presentations
- ▶ Opening days of school & step up days





Consider the **relevance** of SWPBIS to the following existing systems/structures

- ▶ Climate and Culture
- ▶ Graduation and Drop Out activities
- ▶ School Accountability Systems
 - Discipline
 - Attendance
- ▶ Academic achievement and academic engage time
- ▶ Disproportionality



